

Emeryville Center of Community Life

Community Workshop 3



nexus partners

October 13, 2011

Community Workshop 1

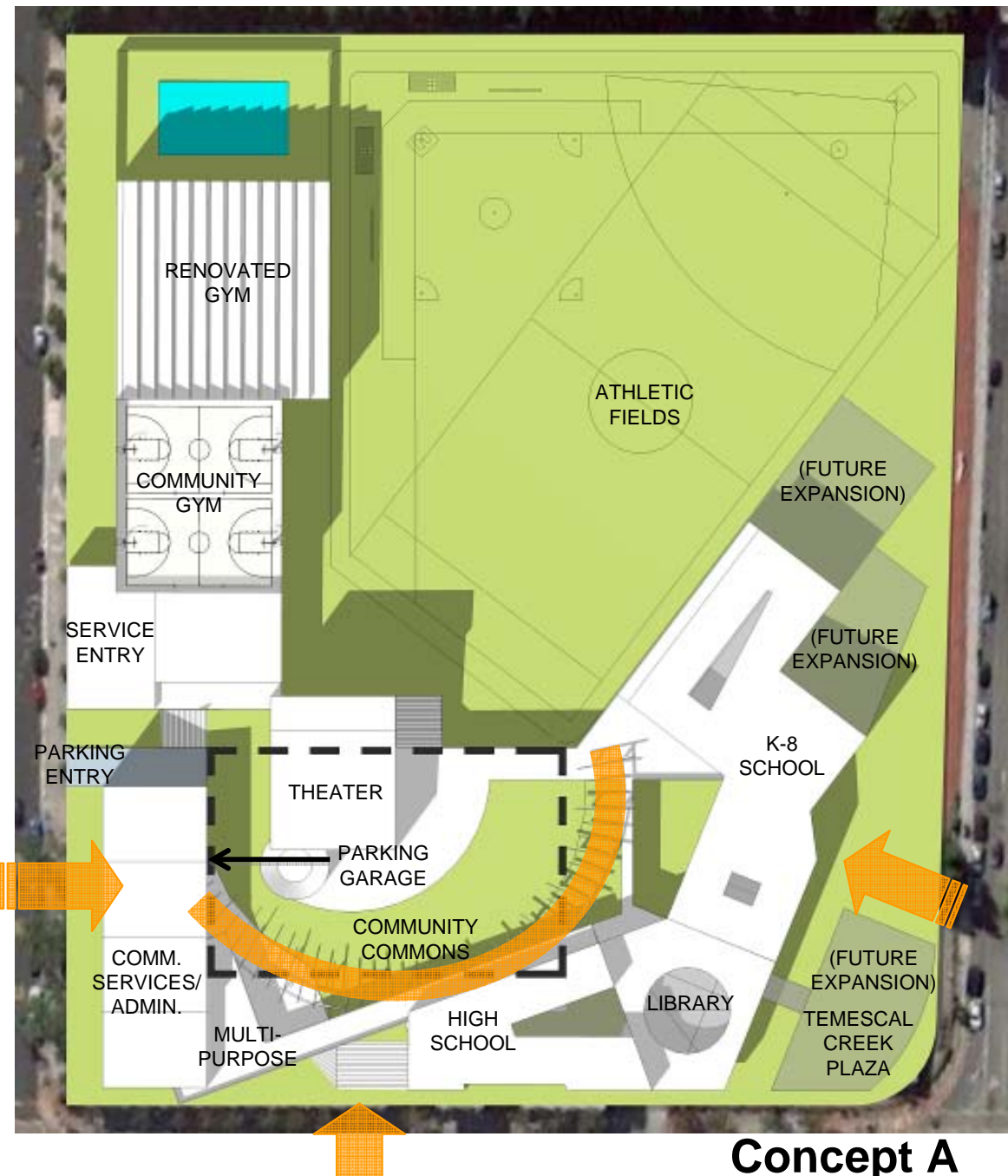
Date: August 27, 2011

Place: Anna Yates Elementary

Content: Presentation & Discussion of 2 Site Massing Options

Key Objectives:

- Identification of the areas of community concern and consensus
- Obtain general community preferences for building, landscape and program placement



Concept A

"The Crescent"



Community Workshop 1



Concept B
"The Loop"



Community Workshop 1

Community Workshop 1

Community Feedback Summary

Key Feedback (partial list – complete list at emeryvillecenter.org)

- General preference for Concept A “The Crescent”
- Community Commons should not be elevated above street
- Separate High School and K-8
- Library best located between High School and K-8
- Move school uses and play areas away from San Pablo
- Provide necessary grade level play areas
- Incorporate Emeryville General Plan elements
- Identify how public and school uses are separated to ensure safety

Community Workshop 2

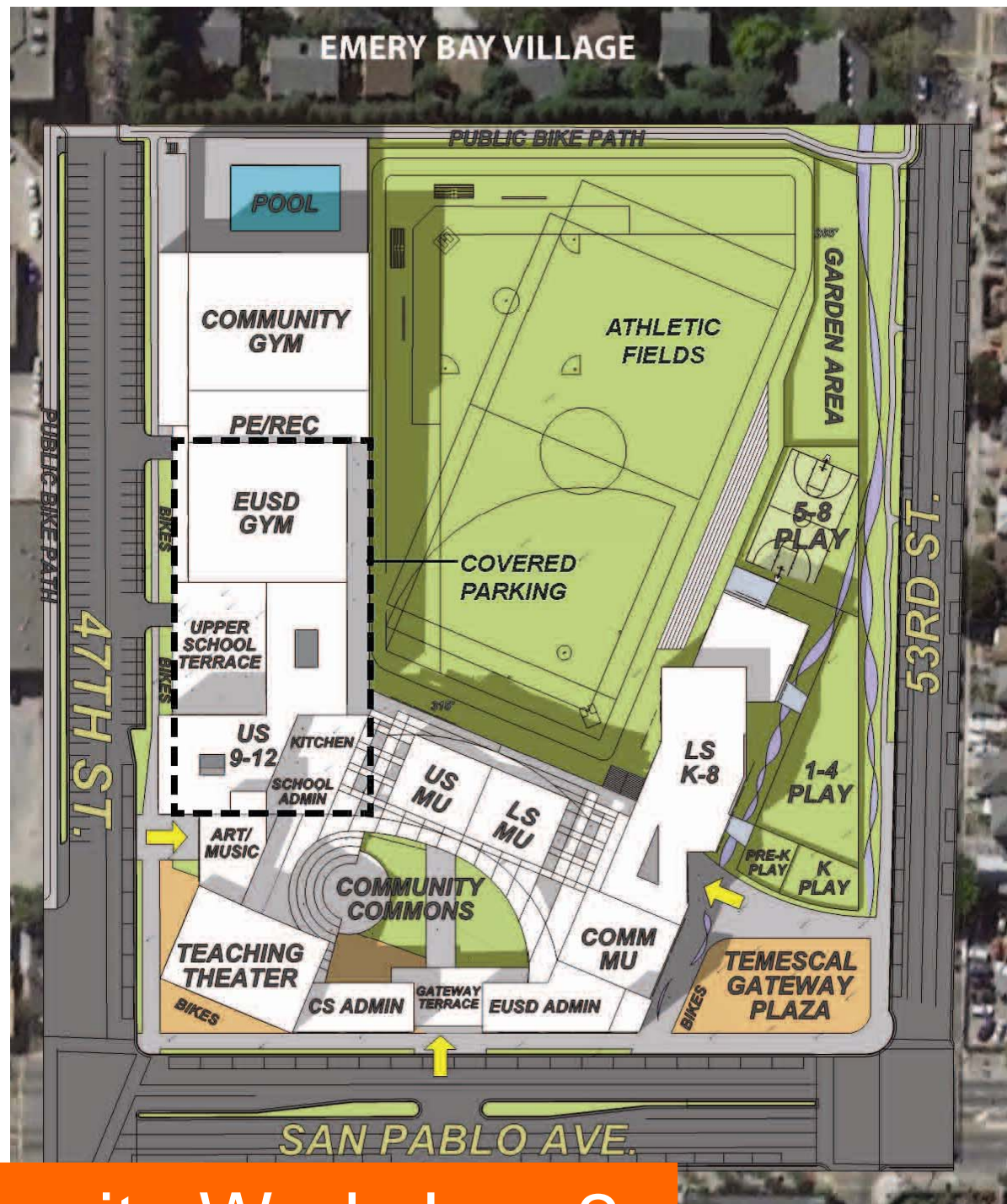
Date: September 17, 2011

Place: Emery Secondary School

Content: Synthesized Design Option presentation

Key Objectives:

- To illustrate the synthesized option responded to community and staff input from Workshop 1
- To utilize real-time community voting technology to identify key topics of concern and focused discussion
- To capture community intelligence for Nexus to continue to refine and optimize the Synthesized Option toward a final Conceptual Design



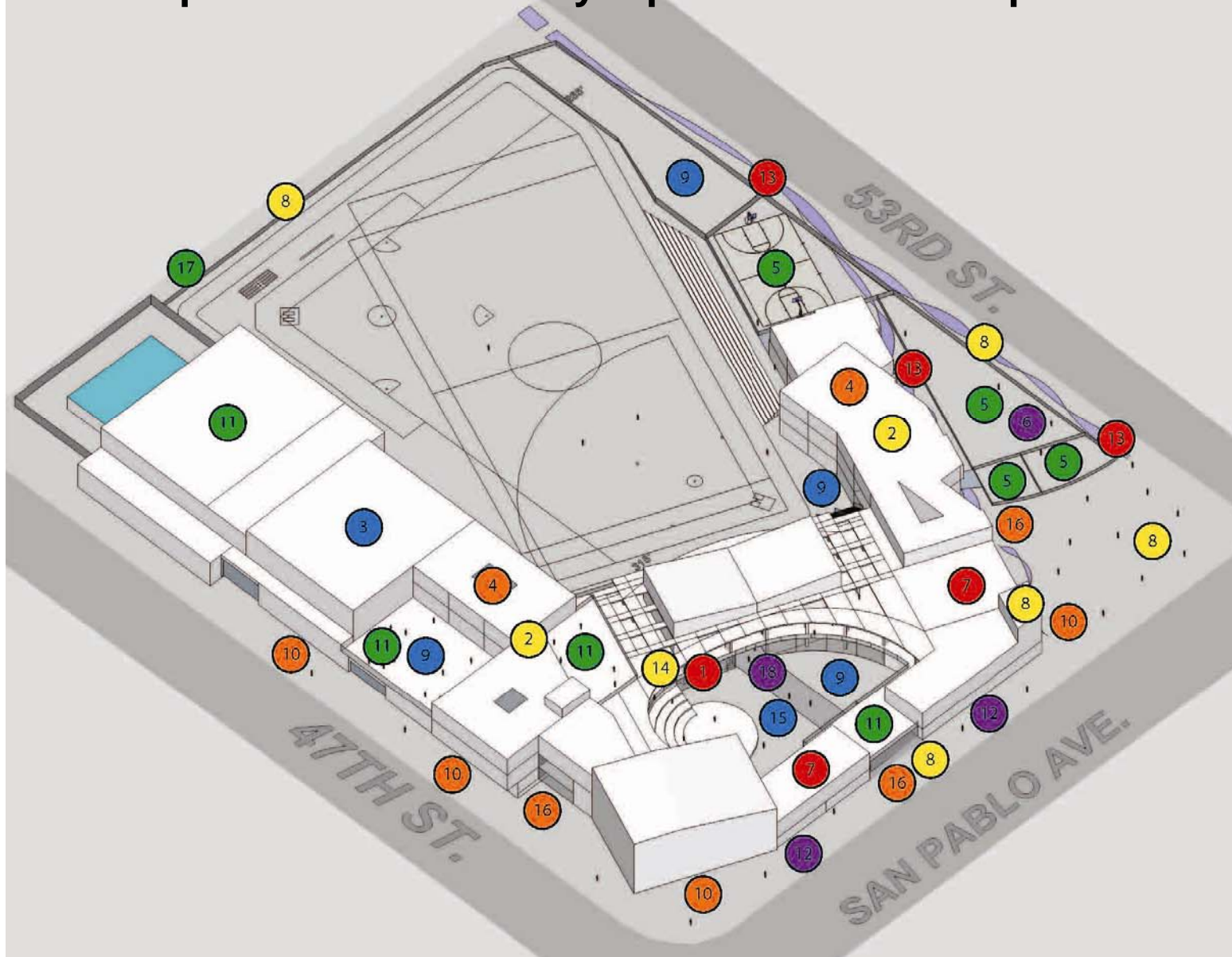
Community Workshop 2

Synthesized Option in Response to Community Input from Workshop 1

Synthesized Option

In Response to Community Input from Workshop 1

ECCL | CONCEPT DESIGN



- 1 Library located between High School and K-8 with easy access for both
- 2 School uses located away from San Pablo
- 3 Move gym closer to classrooms to reduce travel time and public crossover
- 4 Separate High School and K-8
- 5 Provide necessary play areas for grade levels – separate from classrooms
- 6 Move play areas away from San Pablo
- 7 Locate community uses along San Pablo
- 8 Incorporate required Emeryville General Plan elements
- 9 Provide space for gardens
- 10 Provide space for bikes
- 11 Provide rooftop access and solar panels
- 12 Provide more sidewalk space on San Pablo
- 13 Provide 'faux creek' feature
- 14 Library: strategy for addressing security issues for public and school use
- 15 Public / community access restrictions to school uses during school hours
- 16 Access control provided to community commons and primary entrances
- 17 24/7 public greenway (bikeway) through site separated from school uses
- 18 Publicly accessible spaces and landscape areas can be patrolled

Community Workshop 2

Community Feedback Summary

Key Feedback (partial list – complete list at emeryvillecenter.org)

- Make sure there is adequate visibility and control of outdoor spaces.
- Separate School uses from San Pablo. Consider placing building program on the corner of 53rd and San Pablo instead of a public park
- Parking: provide adequate parking to meet demand for cars and bicycles
- Resolve drop-off, and pick-up along 53rd Street – Provide a turn around on 53rd
- Consider naturally ventilated covered parking

Where we are going...

What we are doing now...

- Nexus continues to refine site organization, massing and ideal school and community program relationships
- Nexus and their consultant team are incorporating staff and community feedback into an optimized concept design
- Nexus and Turner are validating phasing, constructability and budget
- The images on the following pages represent that work



Community
Rec. Entry

Covered
Parking Entry

Service Entry

Drop-off / Pick-
up zone

High School
Entry

Community
Entry

Proposed Turn-
Around

Temescal Creek
Landscape
Feature

Drop-off / Pick-
up zone

K-8 Entry

Community
Entry



ECCL Site Plan

October 13, 2011



SYNTHESIZED CONCEPT | MASSING STUDY



SYNTHESIZED CONCEPT | MASSING STUDY



SYNTHESIZED CONCEPT | MASSING STUDY



SYNTHESIZED CONCEPT | MASSING STUDY



SYNTHESIZED CONCEPT | MASSING STUDY



Click link for video: <http://player.vimeo.com/video/30096112>



ECCL Overview: Fly-over



View 1: from the Corner of San Pablo and 53rd

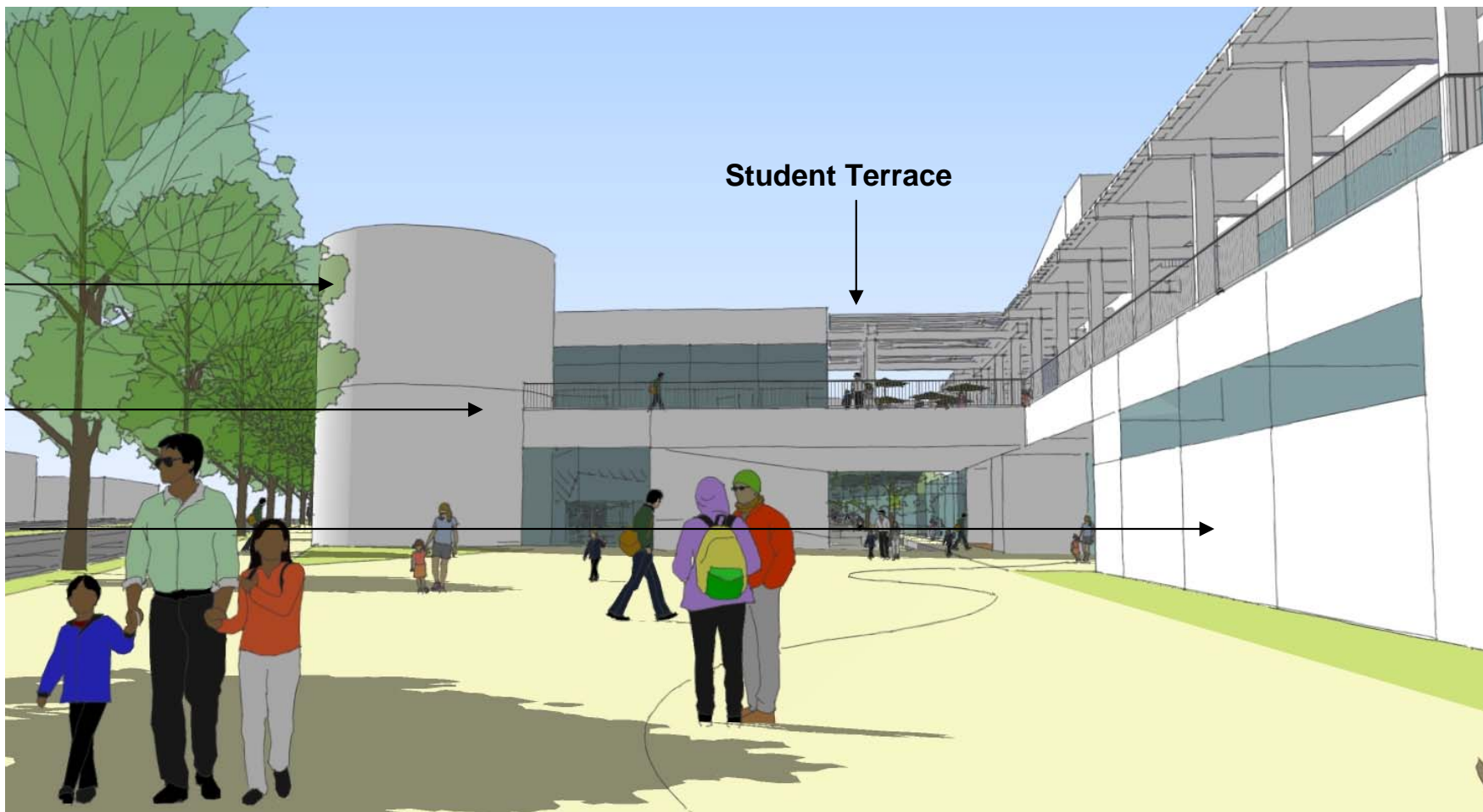


Temescal Creek Portal

October 13, 2011

**Emeryville
“Gateway”
element
Community
Multi-Use**

**Community
Services
(continues
through
Portal into
Commons
and along
San Pablo
edge**



Key Ideas:

- **“Gateway” identifies edge of Emeryville per General Plan**
- **Students separated from public on upper level during school day – Portals can be secured with attractive gates**
- **“Eyes on San Pablo” helps discourage undesirable activities**
- **Convenient access to ECCL Commons from transit stop**



Temescal Creek Portal

**Activities &
Program
Opportunities**



Click link for video: <http://player.vimeo.com/video/30096803>



Animation along San Pablo



View 2: Across San Pablo at 48th Street

Arts Center &
Teaching Theater

Student Multi-Use beyond

Community
Services & EUSD
Administration

Community
Services

San Pablo Avenue

Key Portal Ideas:

- Frames entry to Community / School Library
- Provides for security control point with visibility of both street and commons



Library & Commons Portal

**Activities &
Program
Opportunities**



Click link for video: <http://player.vimeo.com/video/30097554>



View 3: from just inside the Library & Commons Portal off San Pablo

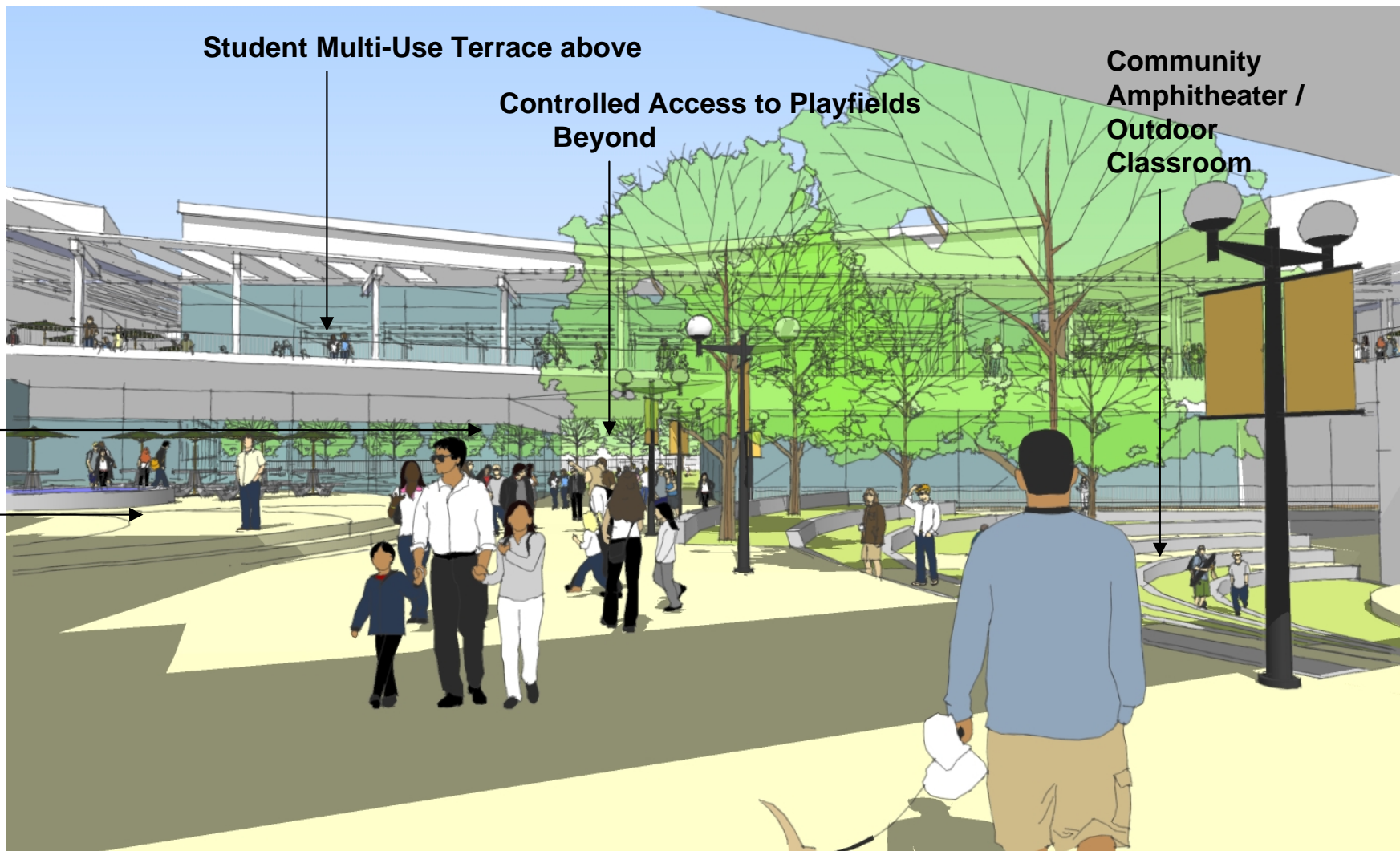
Library
Entrance

Library Plaza &
Café with
outdoor seating

Student Multi-Use Terrace above

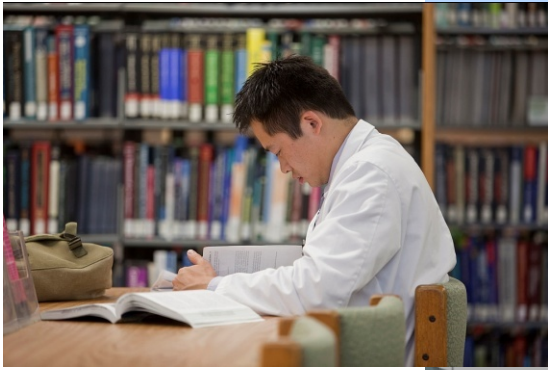
Controlled Access to Playfields
Beyond

Community
Amphitheater /
Outdoor
Classroom



Key Library & Commons Ideas:

- Library convenient to both public and students
- Library adjacent to Café and outdoor seating
- Commons serves multiple users and supports multiple events



Library & Commons

**Activities &
Program
Opportunities**



Click link for video: <http://player.vimeo.com/video/30098203>



View 4: from the Student Terrace overlooking the Community Commons

School Multi-Use

Student Terrace

Community Amphitheater

Library

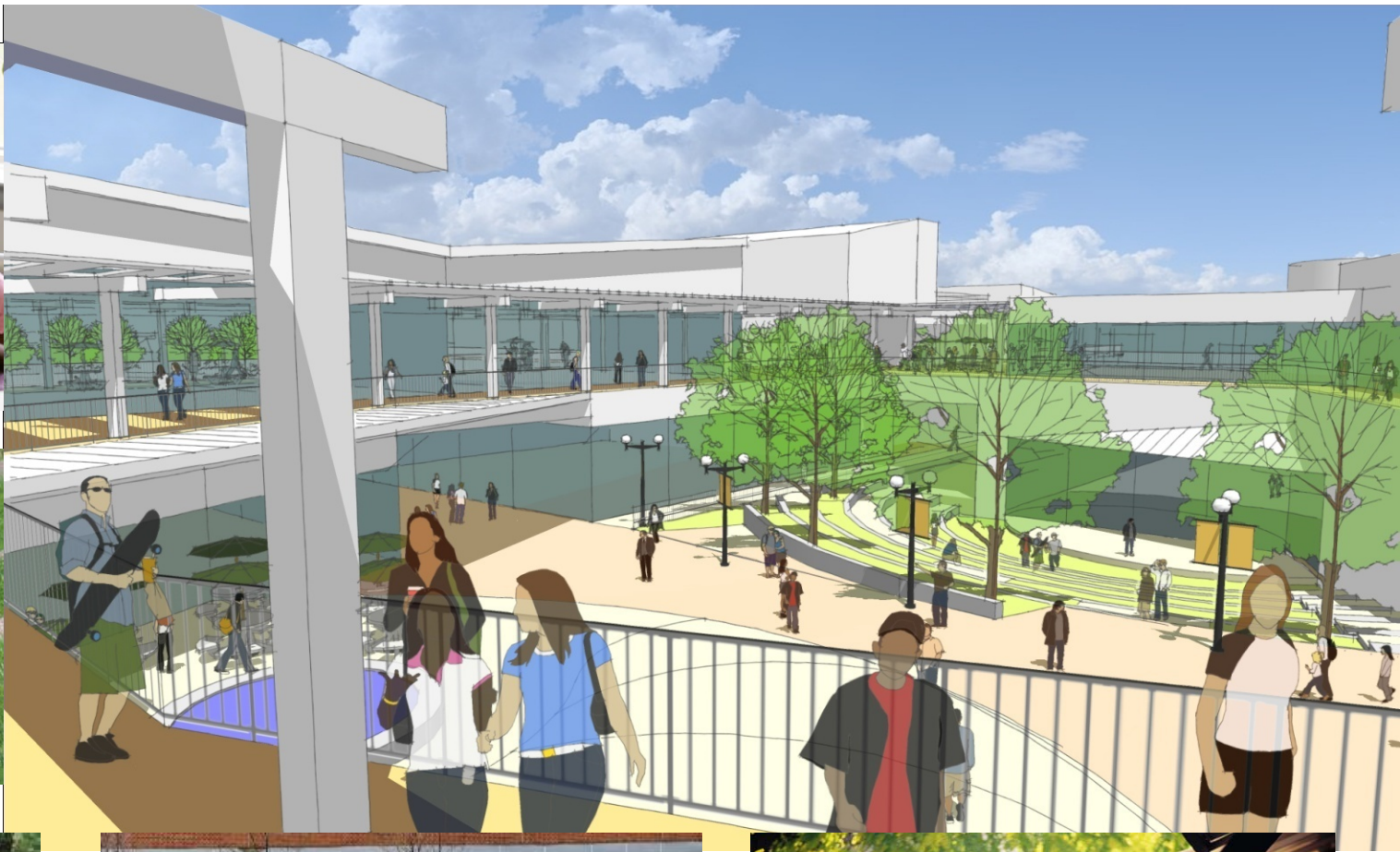
Café Plaza

Community Multi-Use & Outdoor Stage



Key Community Commons Ideas

- Commons supports a wide variety of users, uses and events
- Community Amphitheater expands program opportunities
- Community Multi-Use is stage backdrop to Amphitheater and can support musical and artistic performances
- Controlled, safe & comfortably scaled space
- Students separated from public on upper level during school day



A Day in the Life of...

School Day Morning

Activities &
Program
Opportunities



A Day in the Life of...

After School / Early Evening

Activities &
Program
Opportunities



A Day in the Life of...

Evening Hours

Activities &
Program
Opportunities



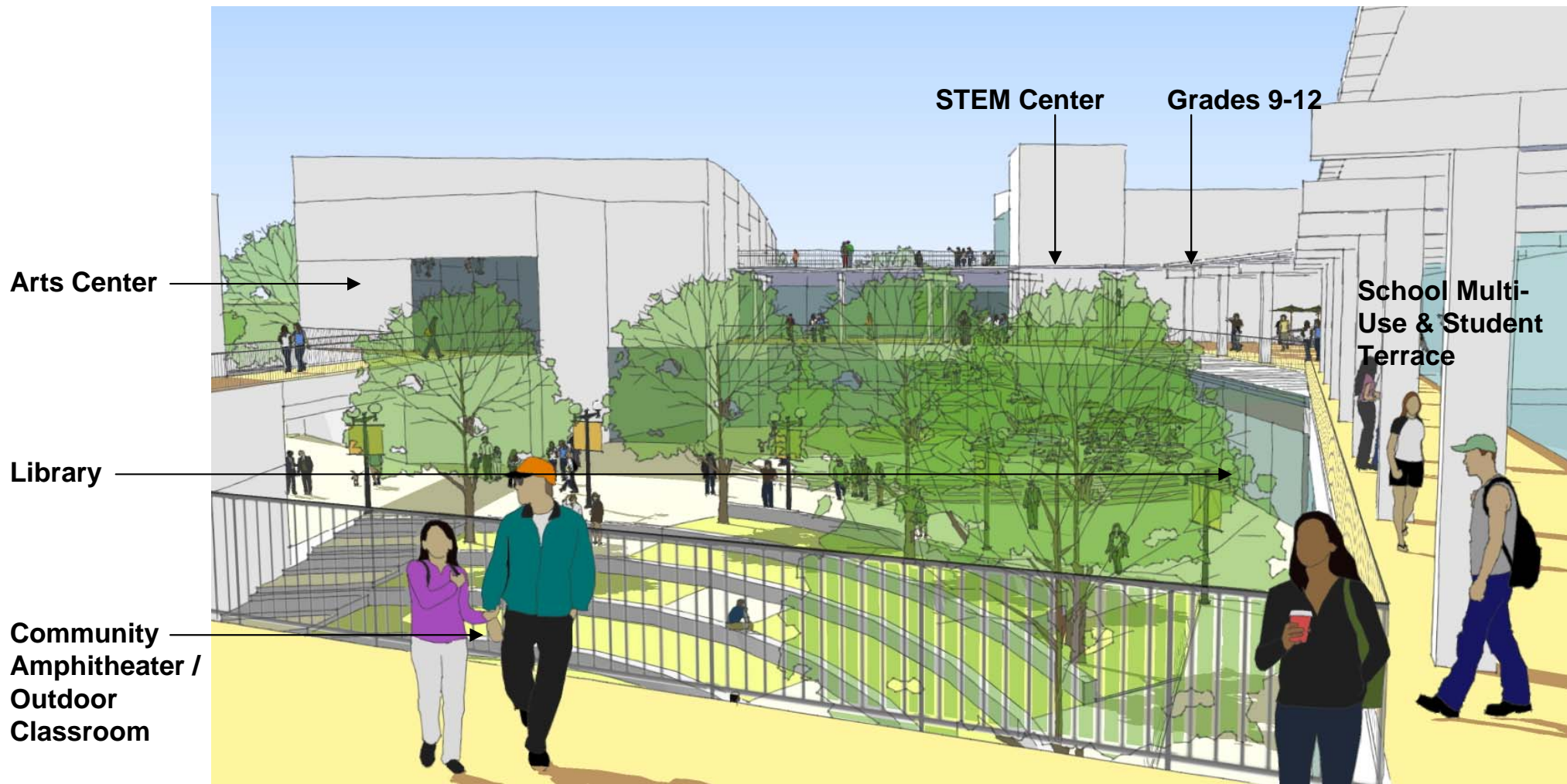
Click link for video: <http://player.vimeo.com/video/30099037>



Animation through Commons



View 5: from the Student Terrace overlooking the Community Commons



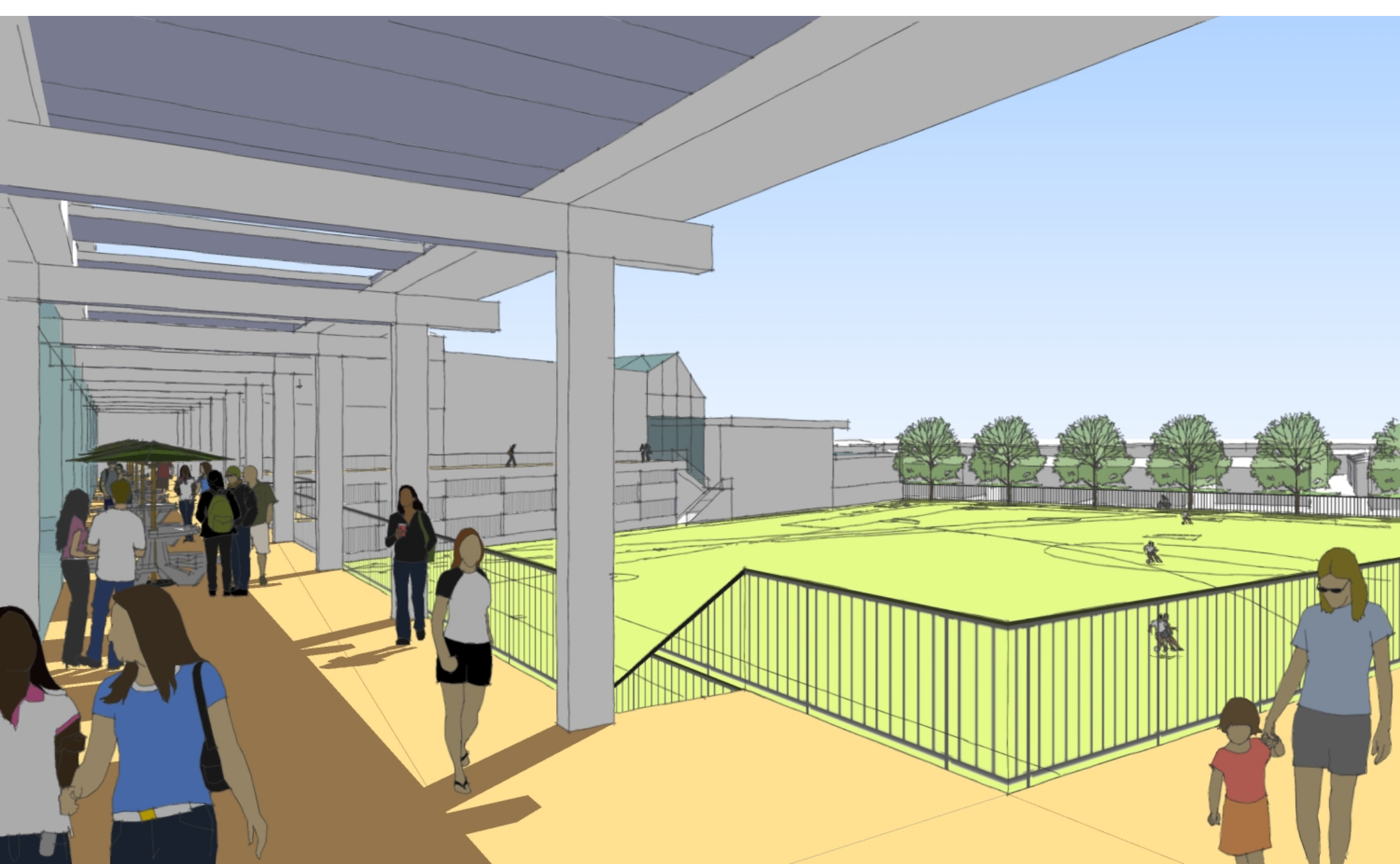
Key Terrace Ideas:

- Students separated from public on upper level during school day
- Community accessible during non-school hours
- Expands community & student space for events and activities
- Provides clear circulation route between programs and spaces



Terrace (students only during school day)

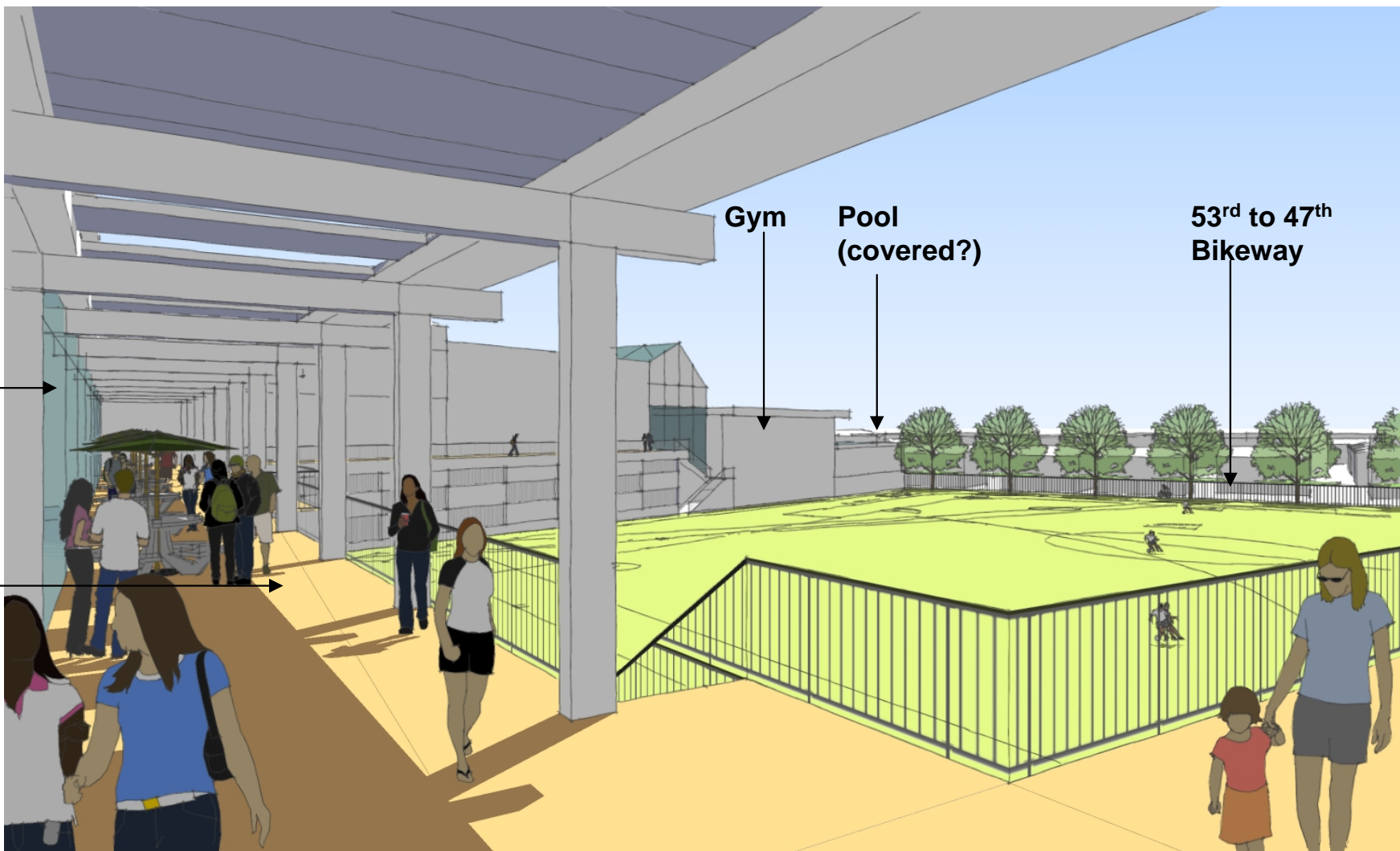
**Activities &
Program
Opportunities**



View 6: from the Student Terrace overlooking the Athletic Fields

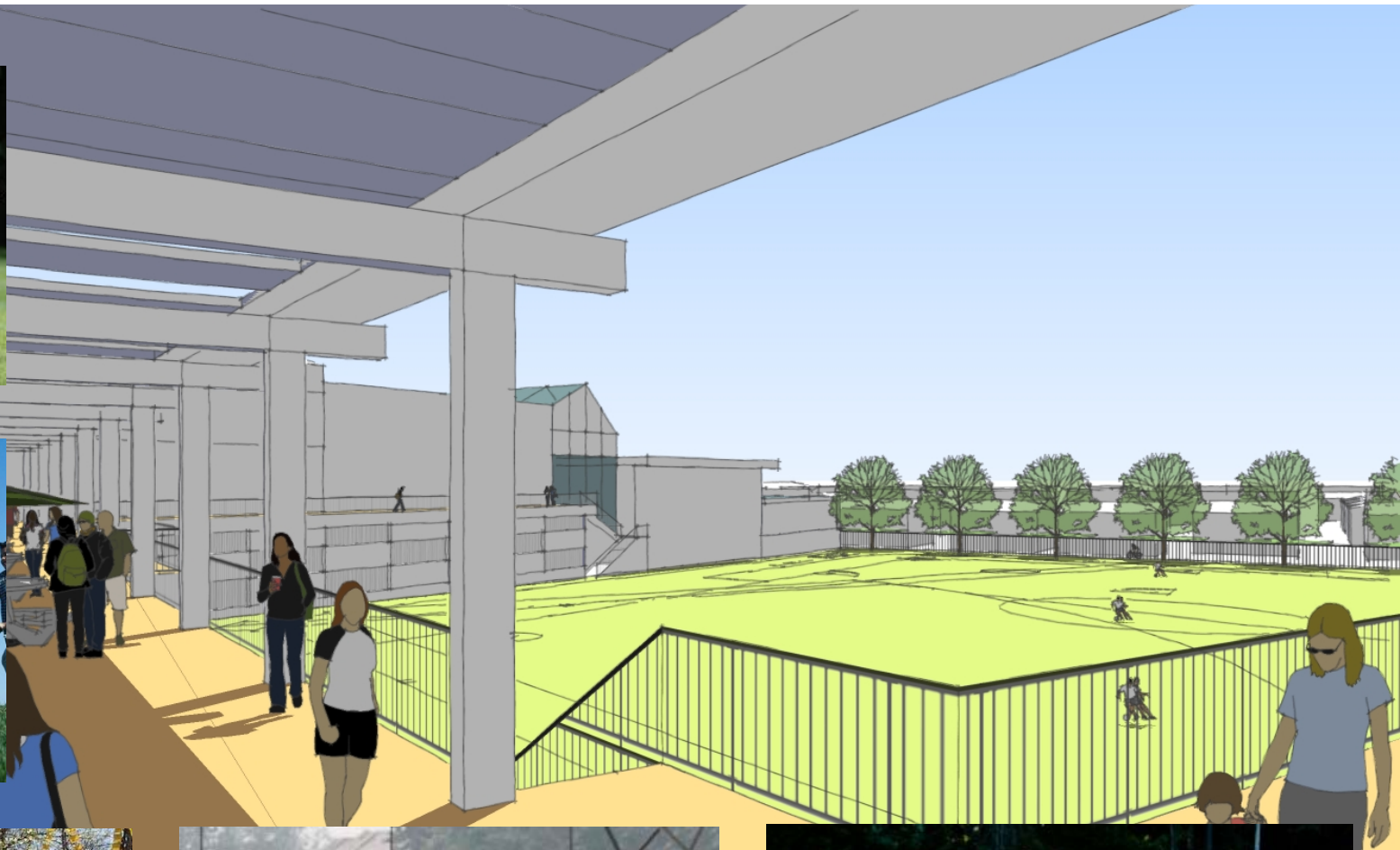
**Student
Multi-Use
Spaces**

**Student
Multi-Use
Terrace**



Key Ideas:

- **Terrace Circulation provides efficient student circulation route from instructional spaces and overlook for spectators**
- **Multi-Use fields in this area support field play, football, softball and casual activities**

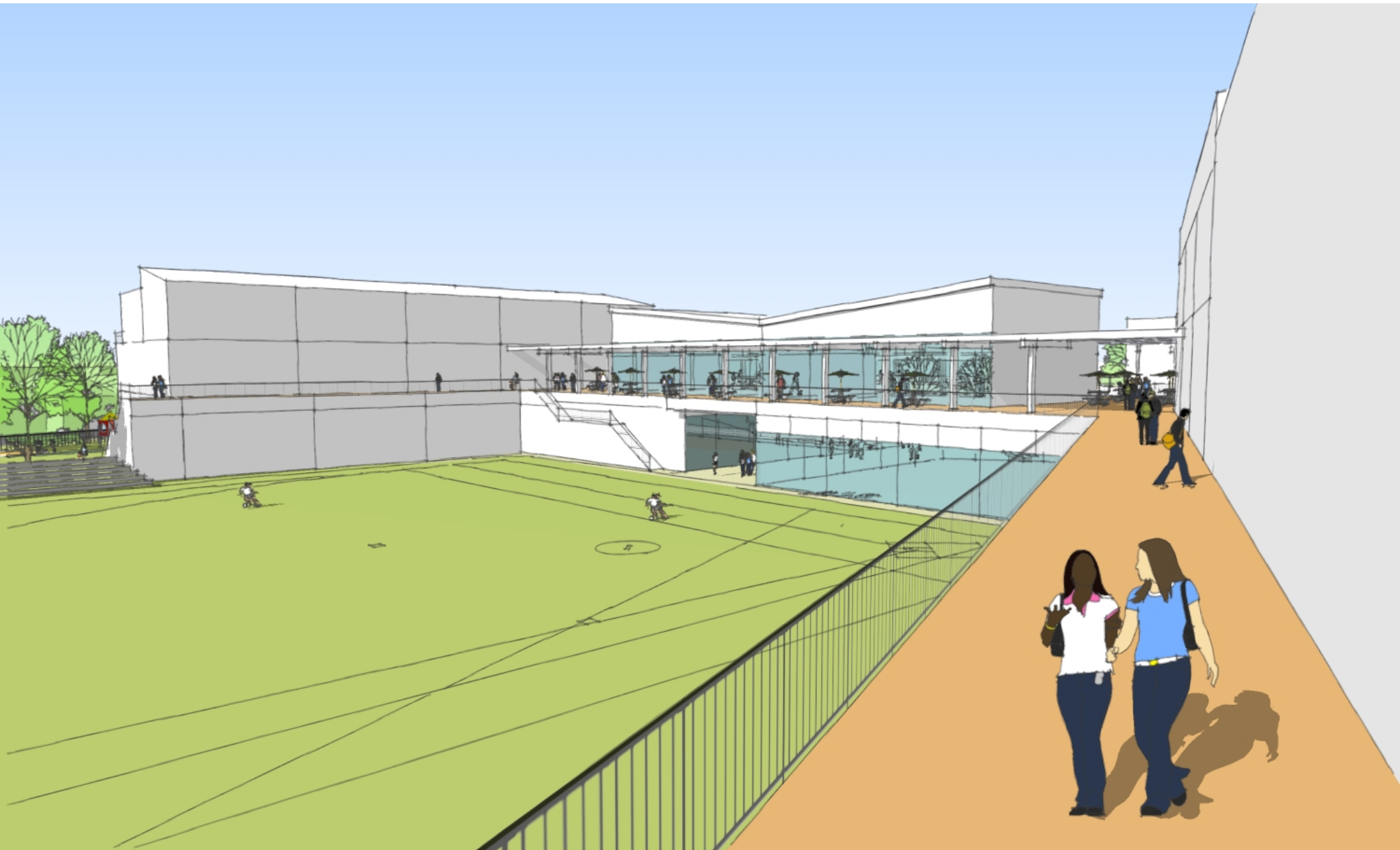


Terrace Overlook at Fields

**Activities &
Program
Opportunities**



Click link for video: <http://player.vimeo.com/video/30099303>



View 7: from the Student Terrace overlooking the Athletic Fields

Grades 4-5

Grades 2-3

Grades K-1

Controlled
Access
between
fields and
Community
Commons

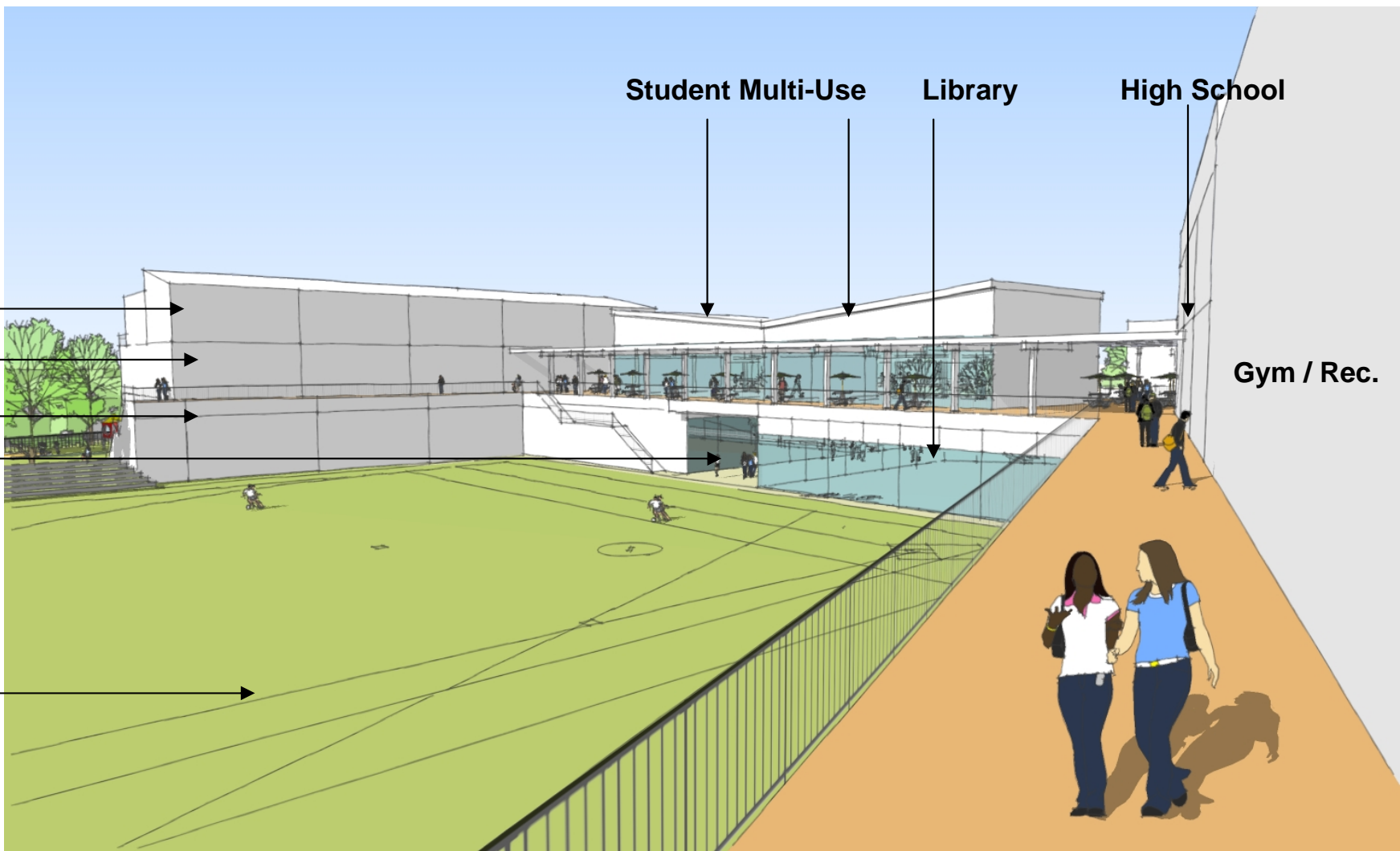
Multi-Use
Athletic
Fields

Student Multi-Use

Library

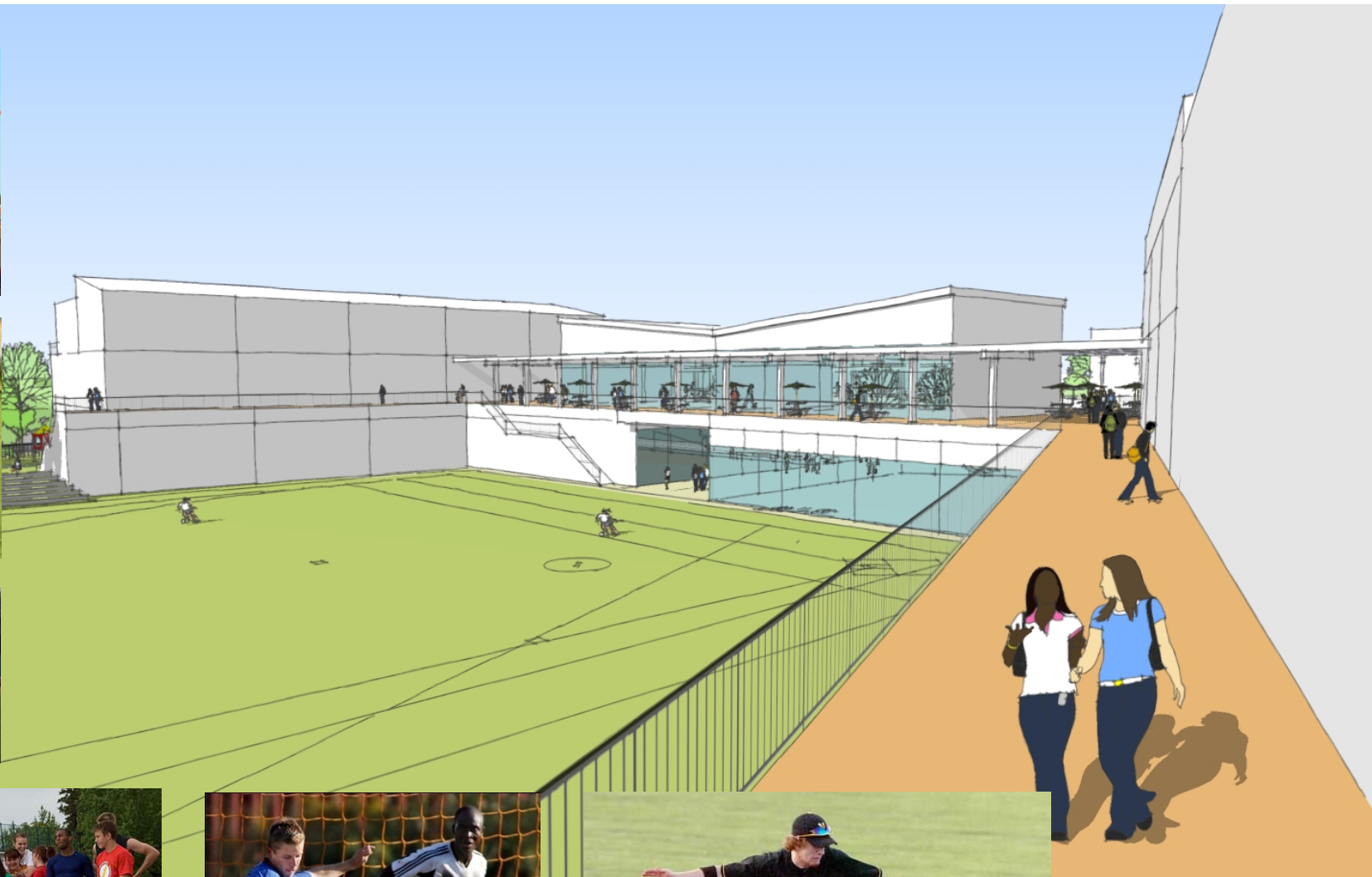
High School

Gym / Rec.



Key Field & Recreation Ideas:

- Multi-Use fields in this area support field play, football, softball and casual activities
- Terrace Circulation provides efficient student circulation route from instructional spaces and overlook for spectators





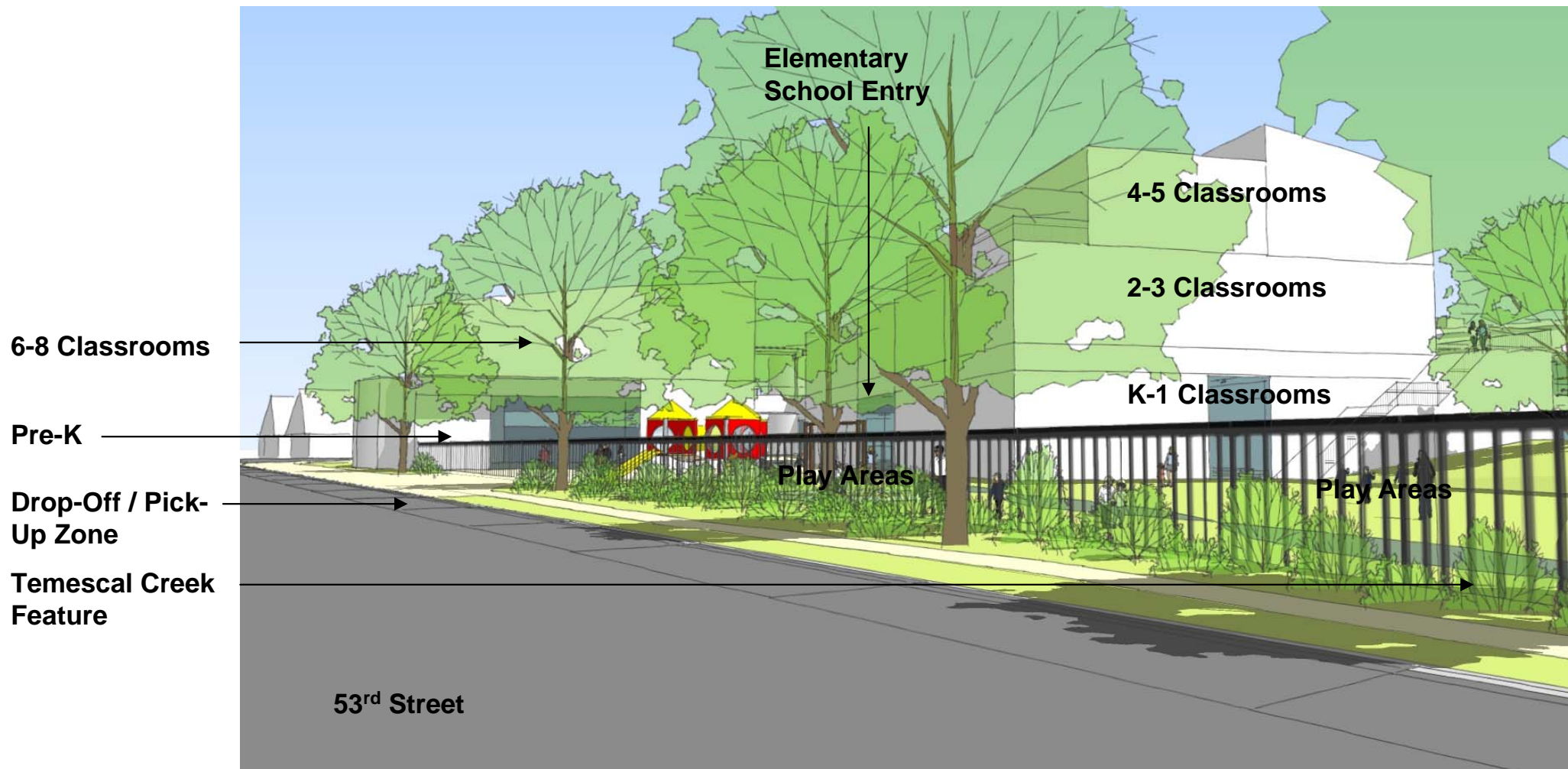
Note: fence shown is 8'-6" tall

View 8: from 53rd Street looking toward the Elementary School entrance



K-8 School

October 13, 2011



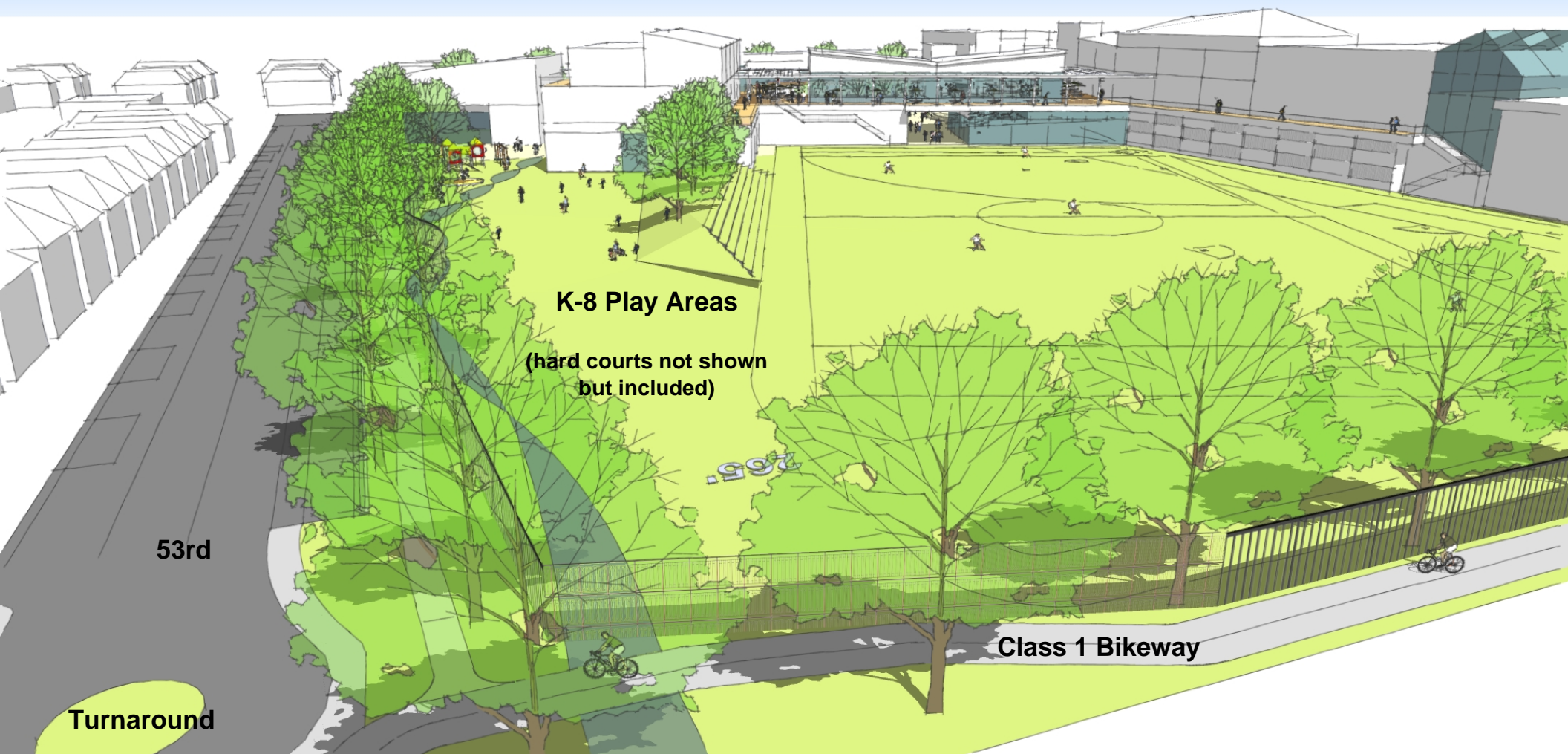
Key K-8 School Ideas:

- Orientation away from San Pablo – Controlled access during school hours
- K-8 play areas connected to larger field areas
- Creek feature becomes an educational opportunity

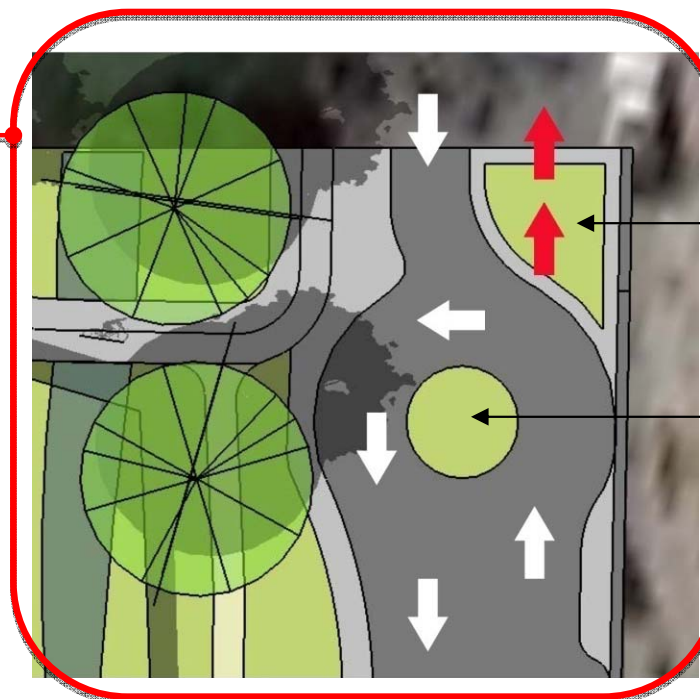


K-8 School

**Activities &
Program
Opportunities**



View 9: from above Emery Bay Village toward the east



Bollards or
Landscape to
discourage thru
traffic

Turnaround
landscape island

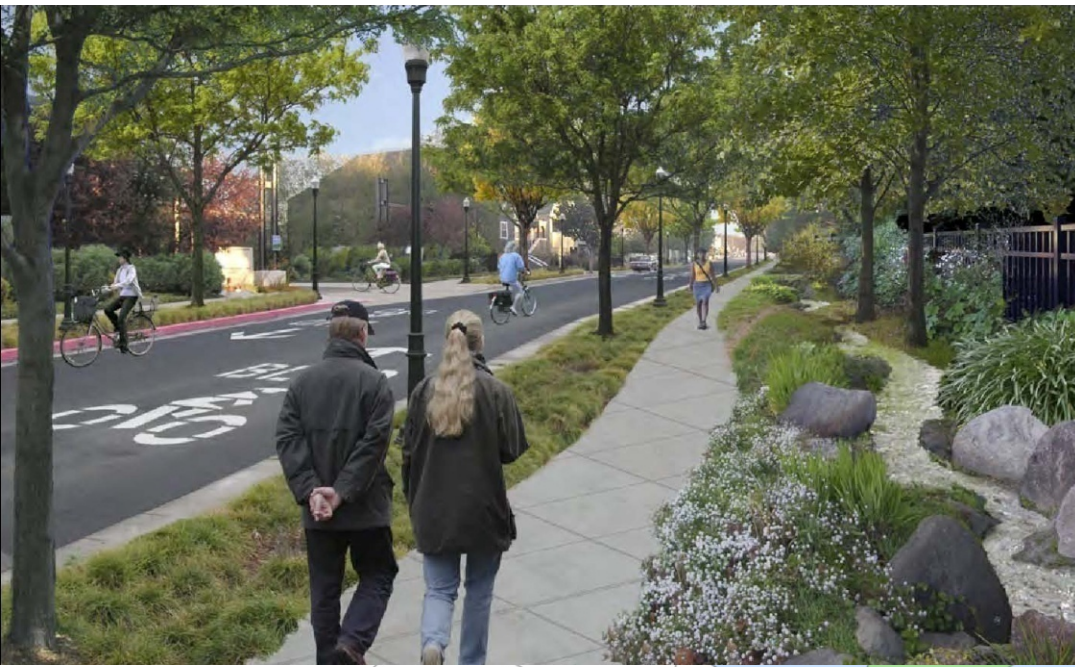
Similar to island
at Salem and 53rd

Key Turnaround Concepts*

- Provides queuing distance and safe, passenger-side vehicle approach to K-8 drop-off and pick-up zones
- Slows and calms traffic
- Consider One-Way landscape or bollards to minimize westbound thru traffic (except for emergency vehicles)

* Requires further input from neighborhood and approval from Emeryville & Oakland agencies

Design Option from Fehr & Peers, Parking & Traffic Engineers

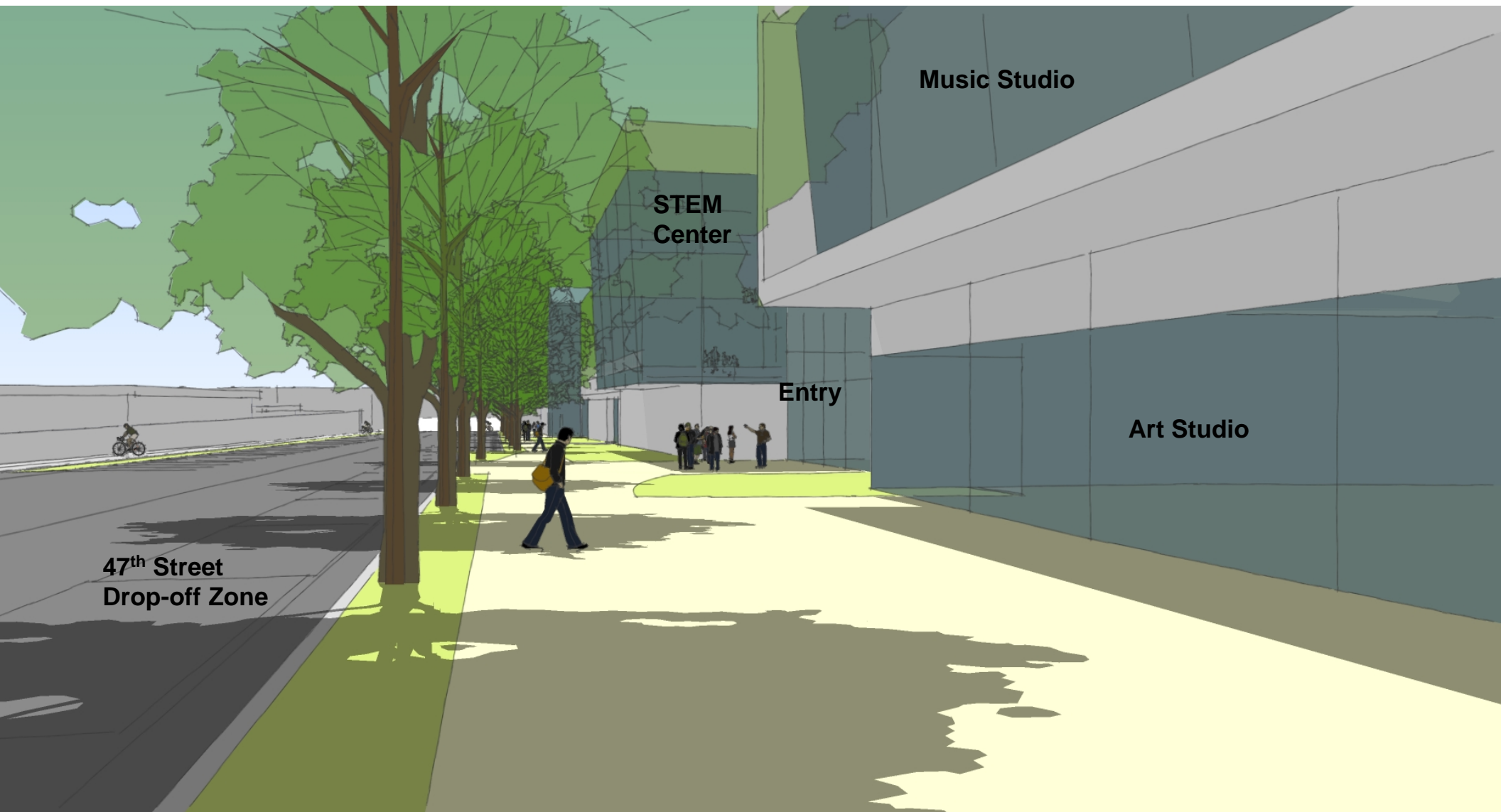


The current ECCL design envisions a widened, landscaped edge along 53rd St. adjacent to the athletic fields consistent with the Emeryville General Plan

Figure 5.30 from the Emeryville General Plan illustrates the view looking east along 53rd St at Emery Bay Village



View 10: from 53rd Street near Emery Bay Village



View 11: High School Entry from corner of San Pablo and 47th

Summary

The current conceptual design work:

- Builds and improves upon the core ideas presented by Nexus in 2009
- Respects and incorporates authentic community and staff engagement and input
- Moves forward the goal of a highly utilized, shared use facility
- Creates a sound basis for the commencement of Schematic Design



SYNTHESIZED CONCEPT | MASSING STUDY